

An Innovative Desktop Solution for Managing Documents in a Network Environment

Sharpdesk™—powerful, flexible and intuitive document management software that integrates your business documents regardless of the application used to create them. Scan paper documents and images directly to Sharpdesk™ from your scan-enabled Digital IMAGER™, or drag and drop existing files on your PC into Sharpdesk™. Use Sharpdesk™ to organize, annotate, edit and combine your files before you print, e-mail, fax or archive them. Sharp—bringing you the tools you need to give your business workflow unprecedented power, speed and efficiency.



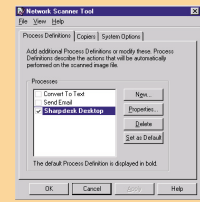
Manage and Integrate Your Documents with Ease

Sharpdesk™ helps streamline your workflow with a collection of easy-to-use, integrated tools. You can scan paper records or contracts for storage or electronic distribution. You can produce, distribute or print integrated reports and proposals composed of different files. You can view, organize and file documents with an easy drag-and-drop interface. And much, much more...

Network Scanning

Sharpdesk's Network Scanner Tool enables you to set up and receive scan jobs from networked Digital IMAGERS™. When you select Scan to Desktop, your hard copy will be automatically scanned, sent to and stored in your PC. You can then view, edit and output

the electronic file as you wish. Unlike other document management software, Sharpdesk™ lets you forward scanned images directly to your desktop PC without having to send them through your file or mail server.



Input

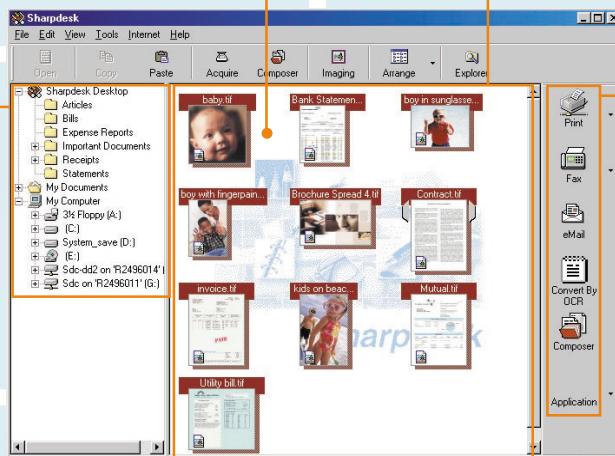
Sharpdesk™ is designed for scan-enabled Sharp Digital IMAGERS™; however, it works with any TWAIN-compliant scanner, including Sharp's all-in-one inkjet products. It enables you to convert your paper documents to electronic data as well as drag and drop digital files stored on your PC or network.

View

The Sharpdesk™ Desktop displays your files in their native format as thumbnails on your PC screen, allowing you to easily browse through documents and visually recognize them without having to open them. Sharpdesk™ can display thumbnail images of over 200 types of files, including TIFF, JPEG, BMP and common Office Suite formats.

Store

By using Sharpdesk™ to store and manage documents on your PC, your work efficiency will increase. Windows® Explorer-like file storage neatly organizes your files and clearly guides you to the document or image you want.



Output

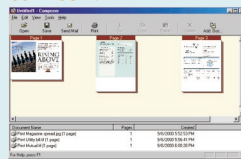
Conveniently print your documents directly from any connected Digital IMAGER™, Sharp inkjet, or other printer. You can also e-mail documents as attachments, open them in your favorite application, store them on your hard drive, fax¹ them, and even use the OCR function to convert scanned documents to editable text—all with drag-and-drop ease!

¹ Fax function requires PC fax software or network fax service.

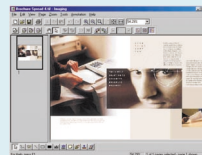
Compose

Sharpdesk™ Composition Editor (Composer) enables you to combine files of different types into a single document, ready for storage, retrieval and distribution. You can reorder pages, add a cover page or inserts, and then print, copy or e-mail the entire document.

COMPOSER



IMAGING



Edit

Sharpdesk™ Imaging converts the format of image files and gives you a range of editing functions including drawing tools and touch-up filters. A convenient annotation feature lets you add stamps, highlights and text comments directly onto a document, just as if it were a paper document.

Sharpdesk™ Specifications

Document/Image Input Methods	Sharp Digital IMAGERS™ with Network Scanner System Scanner (TWAIN32-compliant)
Viewing and Document Management	Folder: tree hierarchy (Windows® Explorer-like) Document: thumbnail with preview file format icons (BMP, TIFF, JPEG, DOC, XLS, PPT, etc.; over 200 file formats supported)
Page (section) Operations	Add, delete, paste, move, copy, de-speckle, crop, straighten page, and undo for image files
Annotation	Copy (cut) and paste portion of page, save text, line art, rectangle, hyperlink, initials, notes, highlighting, freehand drawing, stamp, display/hide annotations for viewing and printing image files
Application Plug-in	Yes
Supported Languages	English (US and British), French, Italian, German, Spanish, Swedish, Dutch
Output Methods	E-mail attachment (in original format, or SDF** file from Sharpdesk Composer), OCR, format conversion (Sharpdesk Imaging: TIFF, JPEG, BMP, AWD, etc.)

Linked Systems	Windows file system, automatic scanned image transfer system (available only with Sharp Digital IMAGERS™ and Network Scanner Tool*)
----------------	---

*Network Scanner Tool is a check-off option while installing Sharpdesk.
**SDF Composer file — a Sharp-original format that can be converted to PDF.

Operating environment

CPU	At least 133MHz Pentium (Pentium 200MHz or better recommended)
Main Memory	Minimum 32 MB (64 MB recommended)
Operating System	Windows® 95 (SP1)/98, or Windows NT® 4.0 (SP4)/2000 (English version)*
Hard Disk Free Space	110 MB or more recommended
Display	800 x 600 or higher resolution, at least 256 colors (True Color recommended)

*OS version with minor updates after release may not be compatible with some versions of Sharpdesk. Design and specifications are subject to change without prior notice. Some brand names and product names are trademarks and registered trademarks, thus are the property of their respective owners.

